



# CLAY

Masterpiece Collection

welcome home.

Approximately 3029 sq ft and Up



## FRENCH MANOR

(WITH OPTIONAL ENTRY COURTYARD & CURVED BRICK WING WALL)

designed by:



## COASTAL CLASSIC

(WITH WOOD TRELLIS WING WALL  
WITH STONE BASE)

designed by:



## CASA BELLA

(WITH OPTIONAL LOW  
STONE WING WALL)

designed by:



## ENGLISH ELEGANCE

(WITH OPTIONAL BRICK WALL  
EXTENSION)

designed by:

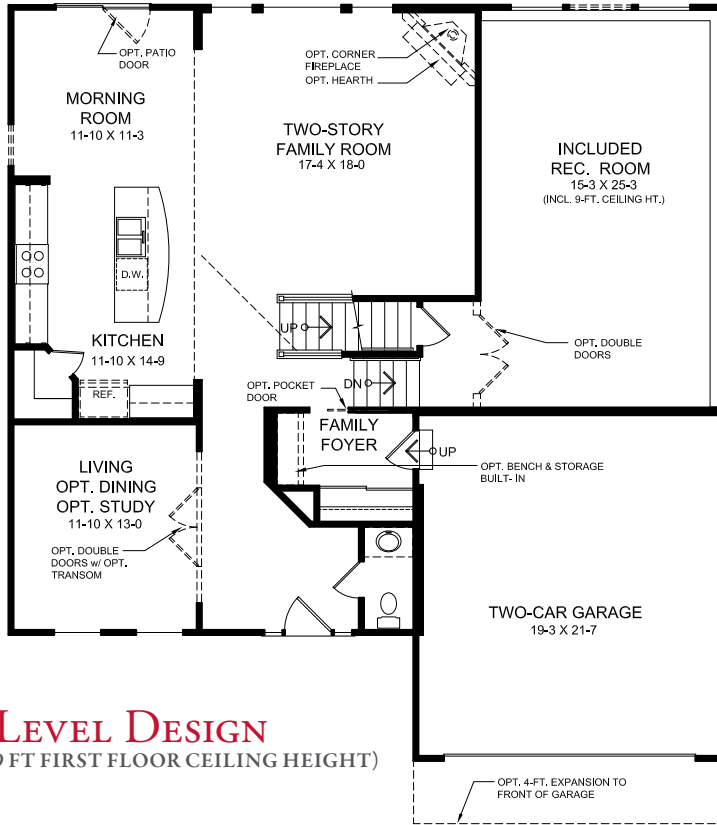


Images & Options Available at [fischerhomes.com](http://fischerhomes.com)

Our Plans Include You

welcome home.

Approximately 3029 sq ft and Up



### MAIN LEVEL FEATURES

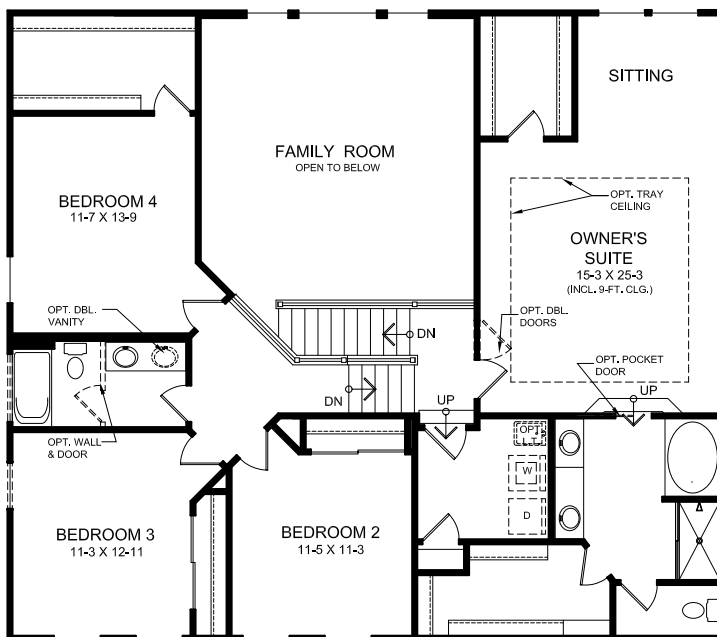
- Unique Five-Level design
- Two Story Family Room
- Large Kitchen with Pantry & Multi-Height Cabinets
- Living/Dining Room with Optional Study
- Included Family Foyer
- Optional Fireplace
- Included Recreation Room One Level Down from Family Room
- Optional 4 ft Expanded Morning Room

### OWNER'S LEVEL FEATURES

- Owner's Retreat Located on its Own Private Level with Sitting Room & Dual Walk-In Closets
- Spacious Owner's Bath with Separate Shower & Garden Tub
- Optional Deluxe Garden Bath with Ceramic Tile Shower
- Optional Designer Bath with Ceramic Tile & Platform Tub

### UPPER LEVEL FEATURES

- Three Additional Bedrooms
- Dynamic Views of Family Room Below
- Optional Divided Hall Bath
- Optional Third Full Bath



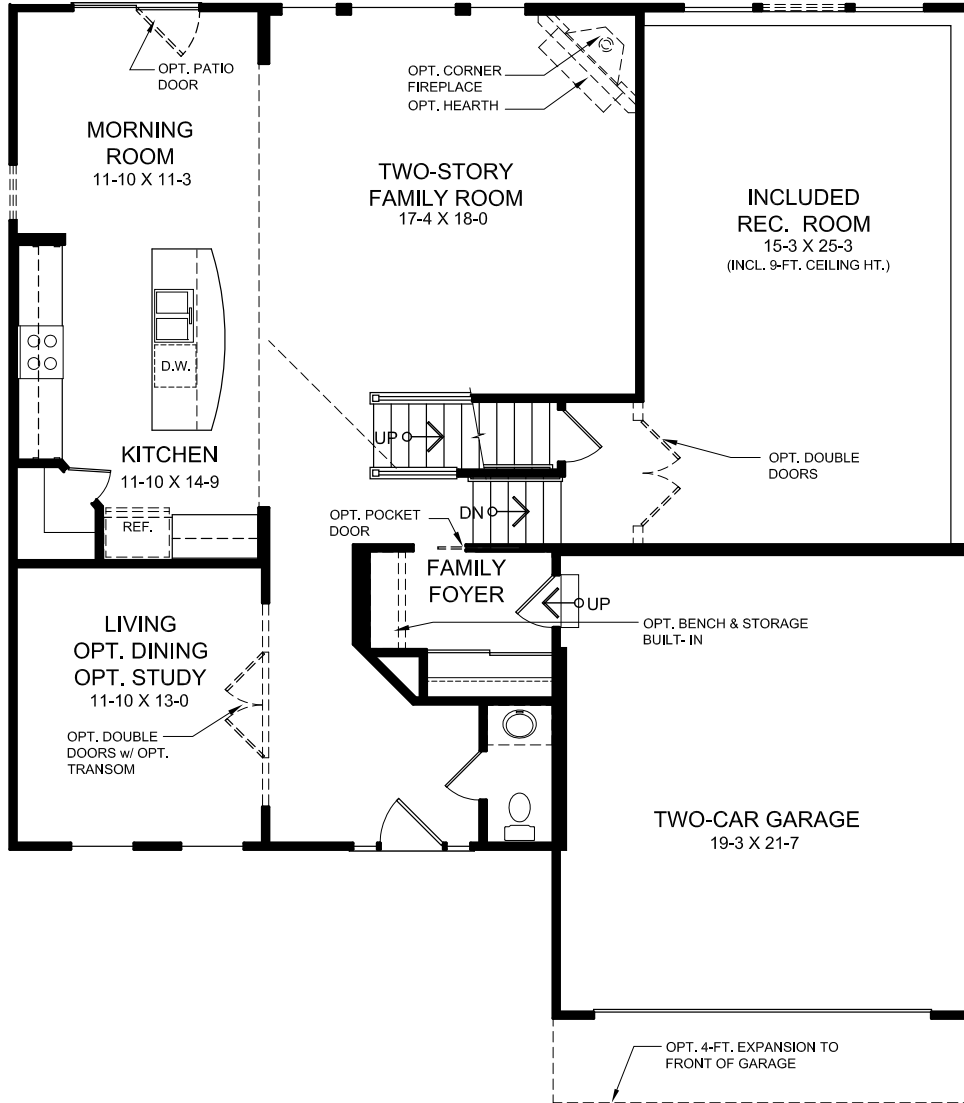
### UPPER LEVEL DESIGN

Images & Options Available at [fischerhomes.com](http://fischerhomes.com)

Copyright © 2019 Fischer Homes, Inc. "Because we are constantly improving our product, we reserve the right to change features, brand names, dimensions, architectural details and designs. This brochure is for illustrative purposes only and not part of a legal contract. Windows, doors, and ceilings may vary on options and elevations selected. Not all features nor options are shown. Please ask our sales counselor for complete information."

RVSD. 09/19  
IM 09/18

Our Plans Include You



## MAIN LEVEL DESIGN OPTIONS

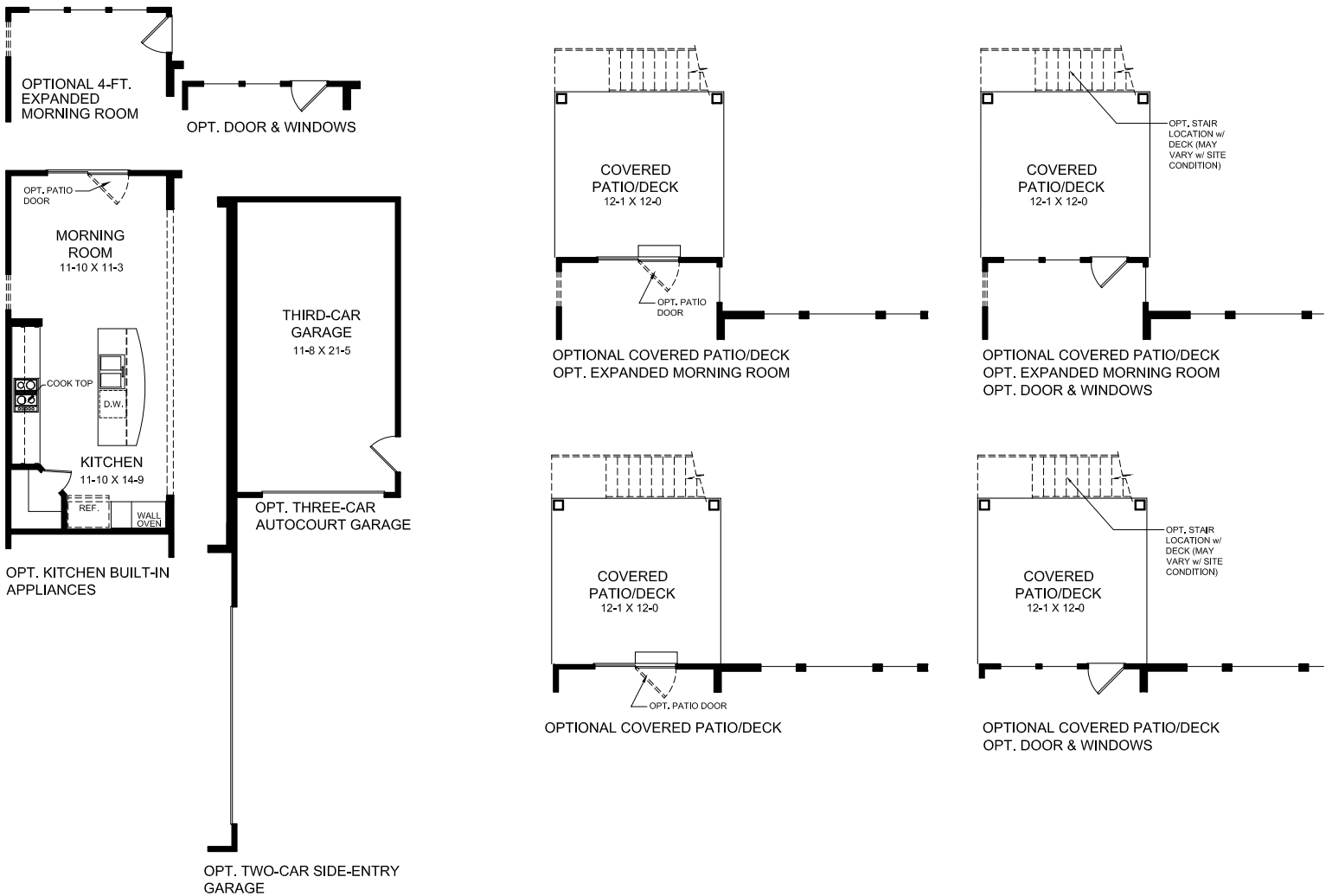
(INCLUDES 9 FT FIRST FLOOR CEILING HEIGHT)



Images & Options Available at [fischerhomes.com](http://fischerhomes.com)

Copyright © 2019 Fischer Homes, Inc. "Because we are constantly improving our product, we reserve the right to change features, brand names, dimensions, architectural details and designs. This brochure is for illustrative purposes only and not part of a legal contract. Windows, doors, and ceilings may vary on options and elevations selected. Not all features nor options are shown. Please ask our sales counselor for complete information."

RVSD. 09/19  
IM 09/18



## ALTERNATE MAIN LEVEL KITCHEN DESIGNS

(INCLUDES 9 FT FIRST FLOOR CEILING HEIGHT)

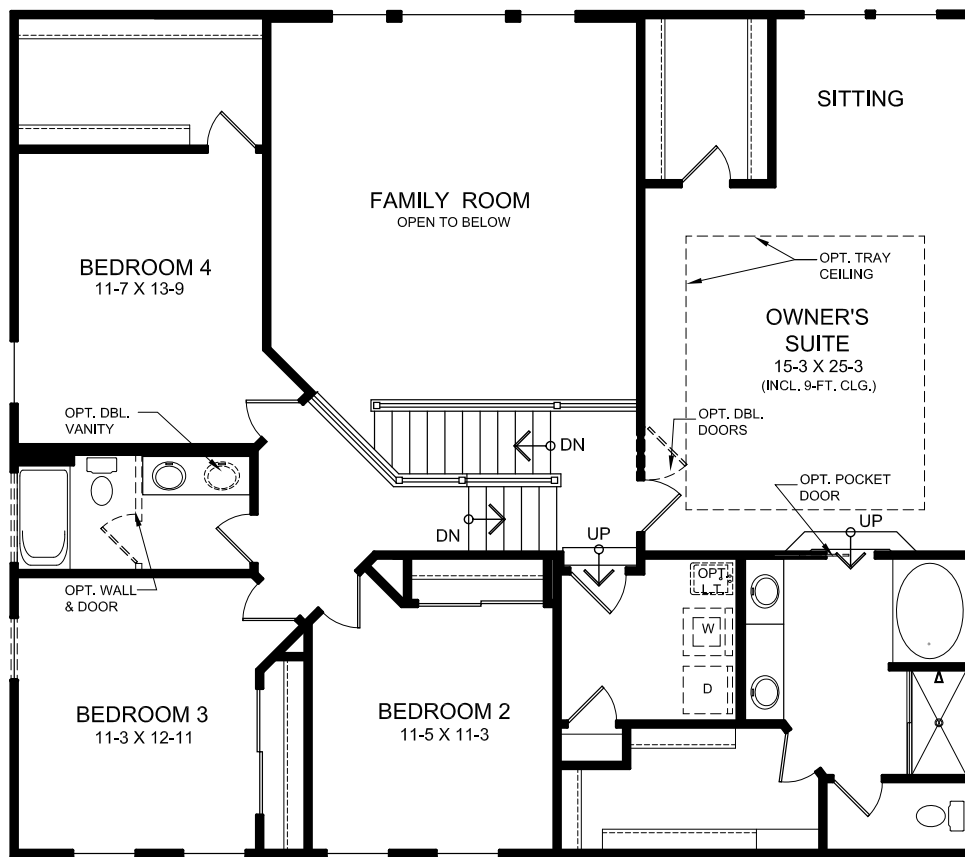


Images & Options Available at [fischerhomes.com](http://fischerhomes.com)

Copyright © 2019 Fischer Homes, Inc. "Because we are constantly improving our product, we reserve the right to change features, brand names, dimensions, architectural details and designs. This brochure is for illustrative purposes only and not part of a legal contract. Windows, doors, and ceilings may vary on options and elevations selected. Not all features nor options are shown. Please ask our sales counselor for complete information."

RVSD. 09/19  
IM 09/18





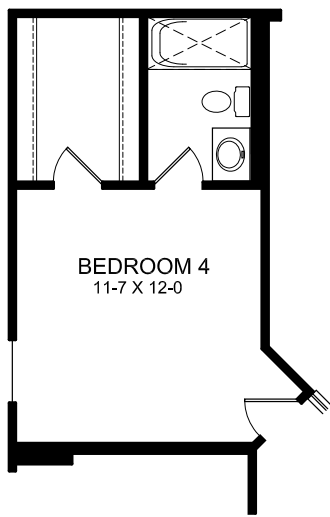
## UPPER LEVEL DESIGN OPTIONS

Images & Options Available at [fischerhomes.com](http://fischerhomes.com)

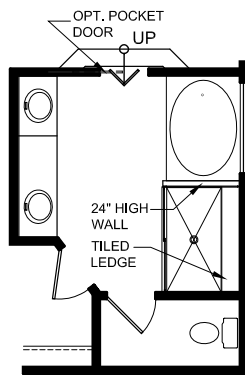
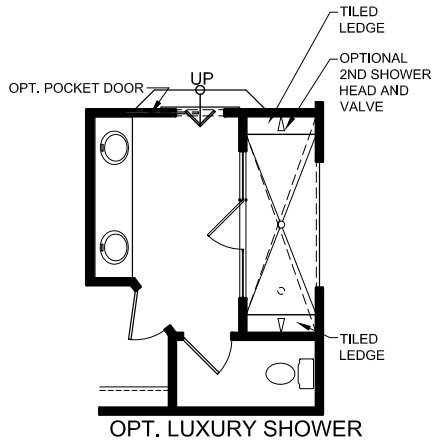


Copyright © 2019 Fischer Homes, Inc. "Because we are constantly improving our product, we reserve the right to change features, brand names, dimensions, architectural details and designs. This brochure is for illustrative purposes only and not part of a legal contract. Windows, doors, and ceilings may vary on options and elevations selected. Not all features nor options are shown. Please ask our sales counselor for complete information."

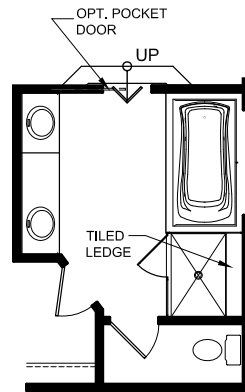
RVSD. 09/19  
 IM 09/18



OPTIONAL BEDROOM 4 BATH



OPTIONAL DELUXE GARDEN BATH



OPTIONAL DESIGNER BATH

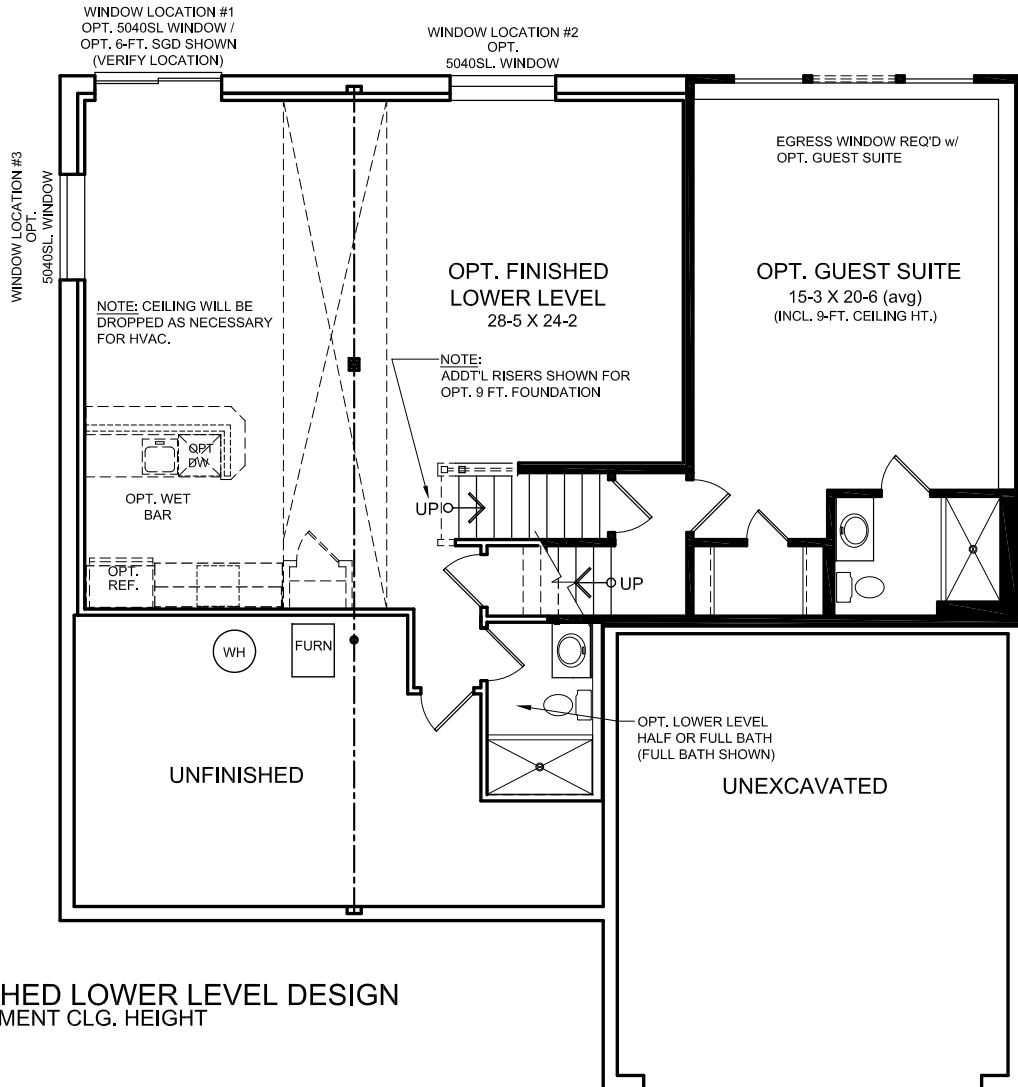
**UPPER LEVEL DESIGN OPTIONS**



Images & Options Available at [fischerhomes.com](http://fischerhomes.com)

Copyright © 2019 Fischer Homes, Inc. "Because we are constantly improving our product, we reserve the right to change features, brand names, dimensions, architectural details and designs. This brochure is for illustrative purposes only and not part of a legal contract. Windows, doors, and ceilings may vary on options and elevations selected. Not all features nor options are shown. Please ask our sales counselor for complete information."

RVSD. 09/19  
 IM 09/18



OPTIONAL FINISHED LOWER LEVEL DESIGN  
 INCLUDED 8-FT BASEMENT CLG. HEIGHT

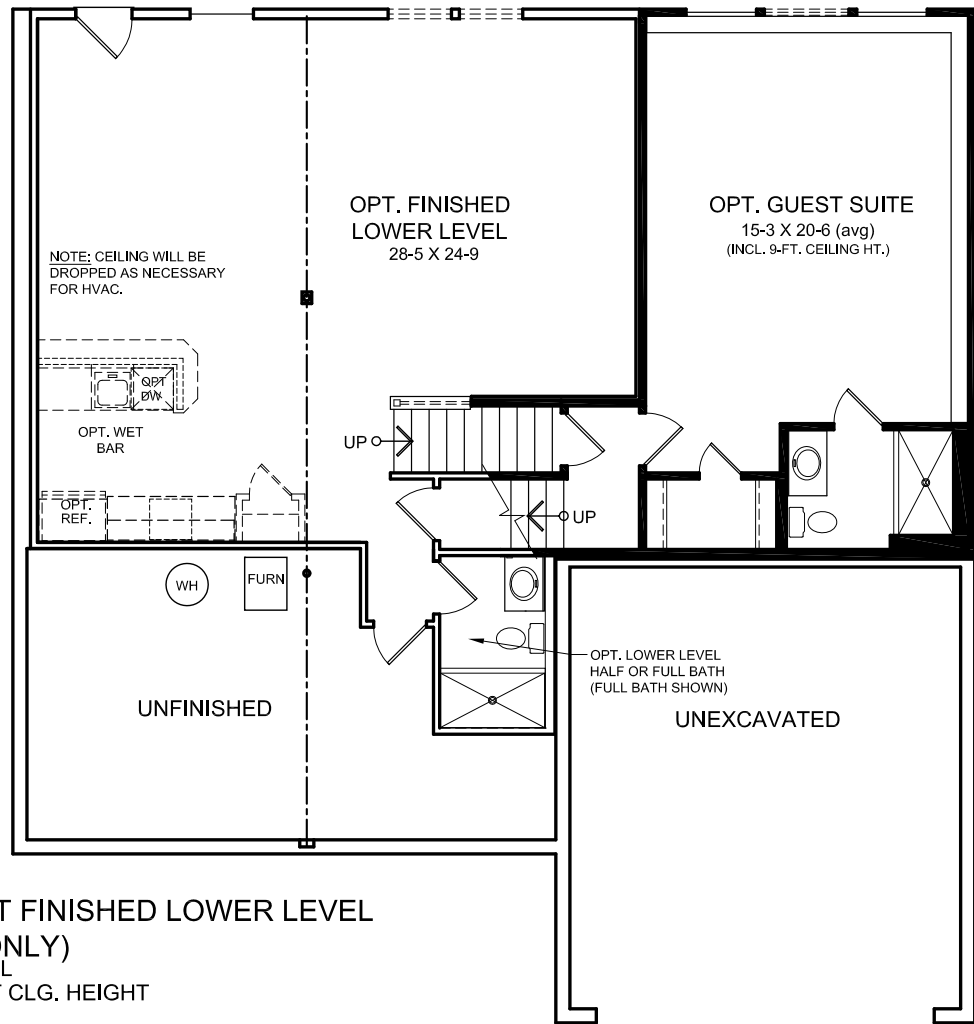
**OPTIONAL FINISHED LOWER LEVEL DESIGN**



Images & Options Available at [fischerhomes.com](http://fischerhomes.com)

Copyright © 2019 Fischer Homes, Inc. "Because we are constantly improving our product, we reserve the right to change features, brand names, dimensions, architectural details and designs. This brochure is for illustrative purposes only and not part of a legal contract. Windows, doors, and ceilings may vary on options and elevations selected. Not all features nor options are shown. Please ask our sales counselor for complete information."

RVSD. 09/19  
 IM 09/18



**OPTIONAL WALKOUT FINISHED LOWER LEVEL DESIGN (ATLANTA ONLY)**  
 w/ INCL. REAR FRAME WALL  
 INCLUDED 9-FT BASEMENT CLG. HEIGHT

**OPTIONAL FINISHED LOWER LEVEL DESIGN**

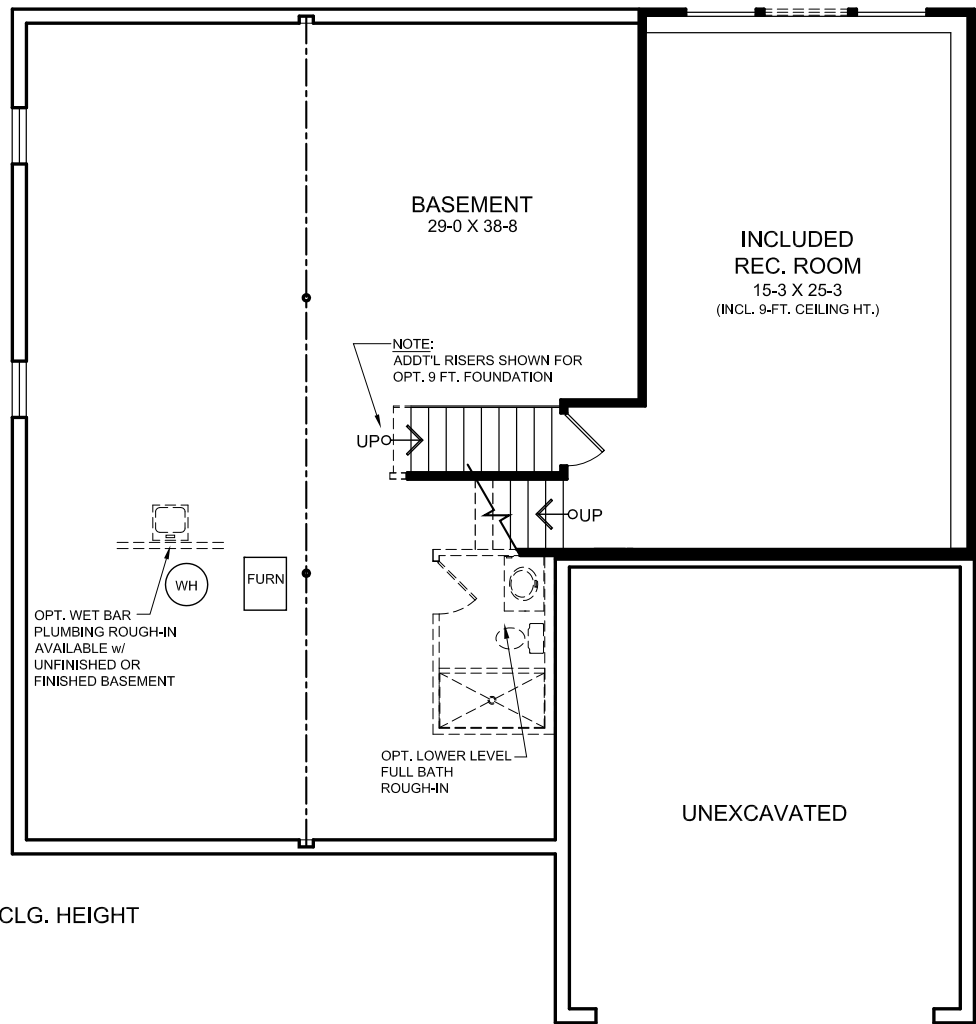


**Images & Options Available at [fischerhomes.com](http://fischerhomes.com)**

Copyright © 2019 Fischer Homes, Inc. "Because we are constantly improving our product, we reserve the right to change features, brand names, dimensions, architectural details and designs. This brochure is for illustrative purposes only and not part of a legal contract. Windows, doors, and ceilings may vary on options and elevations selected. Not all features nor options are shown. Please ask our sales counselor for complete information."

RVSD. 09/19  
 IM 09/18





**BASEMENT DESIGN**  
INCLUDED 8-FT BASEMENT CLG. HEIGHT

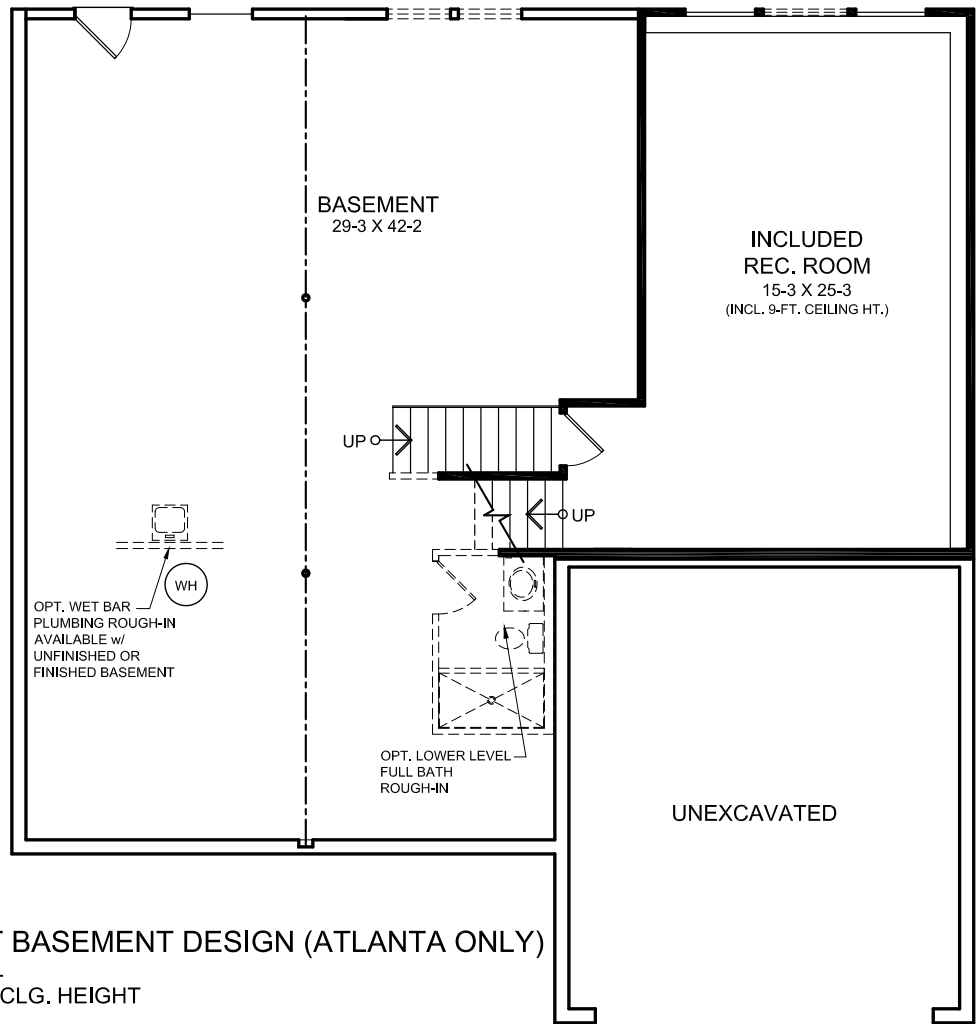
## BASEMENT DESIGN



Images & Options Available at [fischerhomes.com](http://fischerhomes.com)

Copyright © 2019 Fischer Homes, Inc. "Because we are constantly improving our product, we reserve the right to change features, brand names, dimensions, architectural details and designs. This brochure is for illustrative purposes only and not part of a legal contract. Windows, doors, and ceilings may vary on options and elevations selected. Not all features nor options are shown. Please ask our sales counselor for complete information."

RVSD. 09/19  
IM 09/18



**OPTIONAL WALKOUT BASEMENT DESIGN (ATLANTA ONLY)**  
 w/ INCL. REAR FRAME WALL  
 INCLUDED 9-FT BASEMENT CLG. HEIGHT

## BASEMENT DESIGN



Images & Options Available at [fischerhomes.com](http://fischerhomes.com)

Copyright © 2019 Fischer Homes, Inc. "Because we are constantly improving our product, we reserve the right to change features, brand names, dimensions, architectural details and designs. This brochure is for illustrative purposes only and not part of a legal contract. Windows, doors, and ceilings may vary on options and elevations selected. Not all features nor options are shown. Please ask our sales counselor for complete information."

RVSD. 09/19  
 IM 09/18

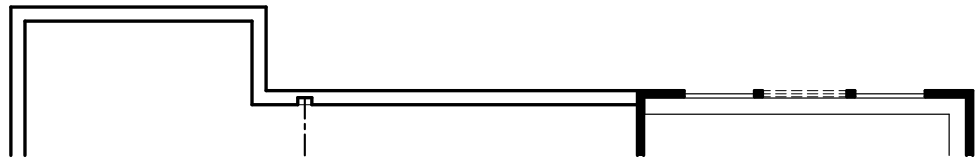


# CLAY

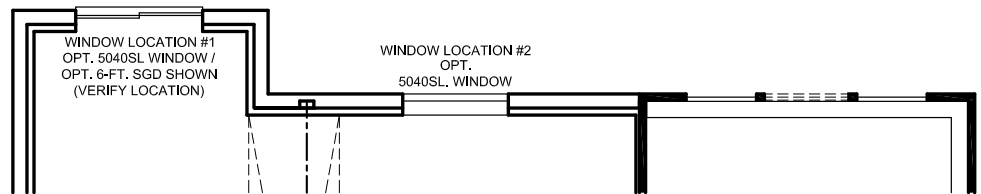
Masterpiece Collection

welcome home.

Approximately 3029 sq ft and Up



OPTIONAL BASEMENT DESIGN  
w/ OPT. EXPANDED MORNING ROOM



OPTIONAL FINISHED LOWER LEVEL DESIGN  
w/ OPT. EXPANDED MORNING ROOM

## BASEMENT DESIGN



Images & Options Available at [fischerhomes.com](http://fischerhomes.com)

Copyright © 2019 Fischer Homes, Inc. "Because we are constantly improving our product, we reserve the right to change features, brand names, dimensions, architectural details and designs. This brochure is for illustrative purposes only and not part of a legal contract. Windows, doors, and ceilings may vary on options and elevations selected. Not all features nor options are shown. Please ask our sales counselor for complete information."

RVSD. 09/19  
IM 09/18

Our Plans Include You

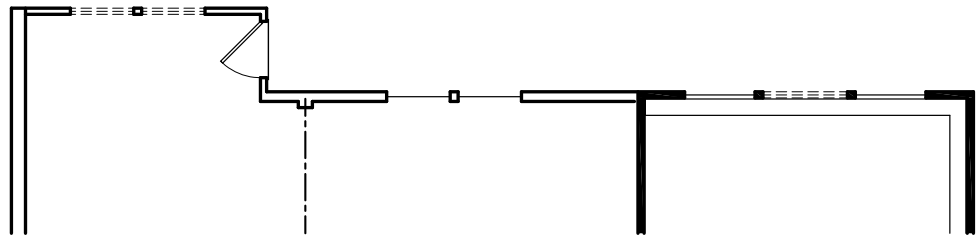


# CLAY

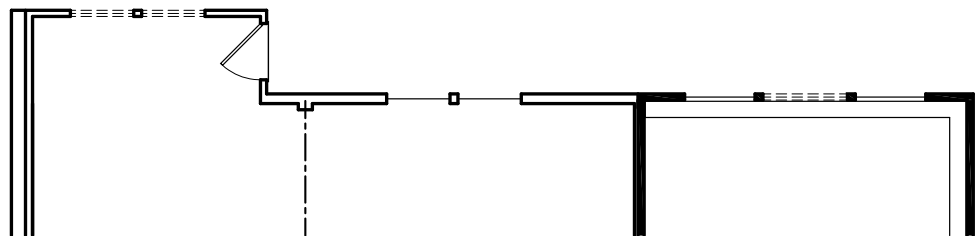
Masterpiece Collection

welcome home.

Approximately 3029 sq ft and Up



OPTIONAL WALKOUT BASEMENT DESIGN (ATLANTA ONLY)  
w/ OPT. EXPANDED MORNING ROOM  
w/ INCL. REAR FRAME WALL



OPTIONAL WALKOUT FINISHED LOWER LEVEL DESIGN (ATLANTA ONLY)  
w/ OPT. EXPANDED MORNING ROOM  
w/ INCL. REAR FRAME WALL

## BASEMENT DESIGN



Images & Options Available at [fischerhomes.com](https://www.fischerhomes.com)

Copyright © 2019 Fischer Homes, Inc. "Because we are constantly improving our product, we reserve the right to change features, brand names, dimensions, architectural details and designs. This brochure is for illustrative purposes only and not part of a legal contract. Windows, doors, and ceilings may vary on options and elevations selected. Not all features nor options are shown. Please ask our sales counselor for complete information."

RVSD. 09/19  
IM 09/18

Our Plans Include You