

3,029-3,735 SQFT

2 Story

4-5 Bedrooms

2-5 Baths



Photos, Options,
Virtual Tours
& More

Modern Farmhouse



American Classic



Urban Modern



Coastal Classic

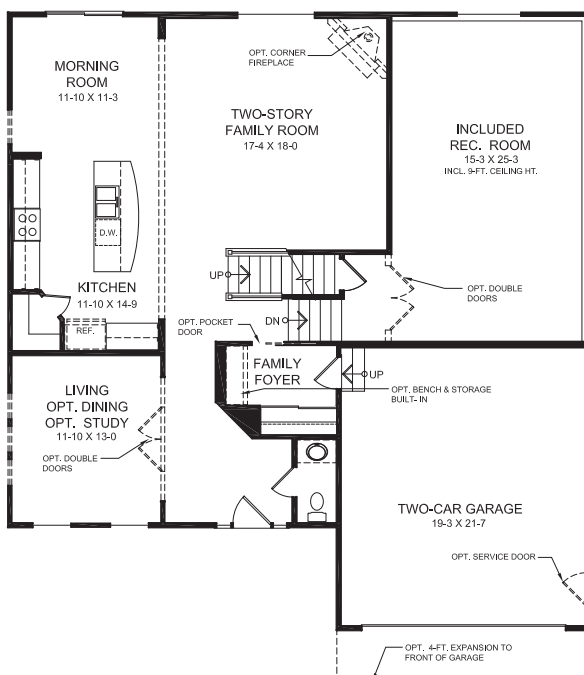
VIEW FLOORPLANS ON FISCHERHOMES.COM



© 2023 Fischer Homes, Inc. Because we are constantly improving our product, we reserve the right to change features, brand names, dimensions, architectural details and designs. This brochure is for illustrative purposes only and not part of a legal contract. Windows, doors, and ceilings may vary on options and elevations selected. Not all features nor options are shown. Please ask our sales counselor for complete information.

RVSD
01/23

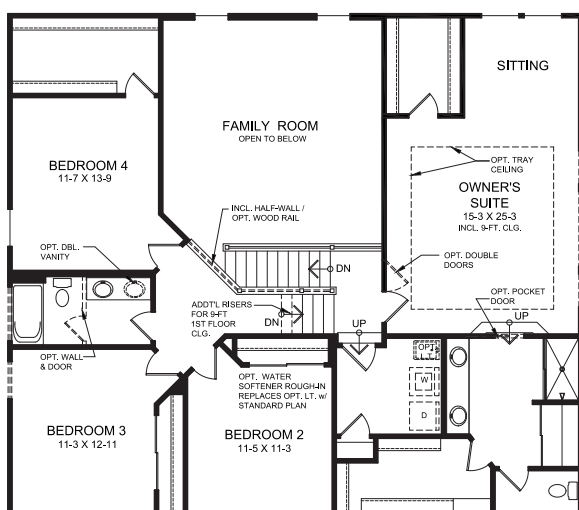
Main Level



Main Level Features

- Unique Five-Level Design
- Included Family Foyer
- Two-Story Ceiling in Family Room
- Large Open Kitchen with Pantry Closet
- Living Room or Optional Study
- Included Rec Room just Down from Family Room
- Optional 4ft Morning Room Expansion
- Optional Fireplace
- Optional Guest Suite
- Optional Built-in Appliances

Upper Level



Upper Level Features

- Owner's Retreat Located on its Own Private Level
- Spacious Owner's Bath
- Optional Deluxe Garden Bath with Separate Shower and Garden Tub
- Optional Tray Ceiling
- 3 Additional Bedrooms
- Expansive Views into Great Room from Upper Level Balcony
- Optional Divided Hall Bath
- Optional 3rd Full Bath

VIEW FLOORPLANS ON FISCHERHOMES.COM



© 2023 Fischer Homes, Inc. Because we are constantly improving our product, we reserve the right to change features, brand names, dimensions, architectural details and designs. This brochure is for illustrative purposes only and not part of a legal contract. Windows, doors, and ceilings may vary on options and elevations selected. Not all features nor options are shown. Please ask our sales counselor for complete information.

RVSD
01/23