



GRANDIN

Designer Collection

welcome home.

Approximately 2711 sq ft and Up



URBAN MODERN

designed by: *FH*



COASTAL CLASSIC
(WITH OPTIONAL STONE VENEER &
OPTIONAL SIDE ENTRY GARAGE)

designed by: *FH*



CAMBRIDGE COTTAGE

designed by: *FH*

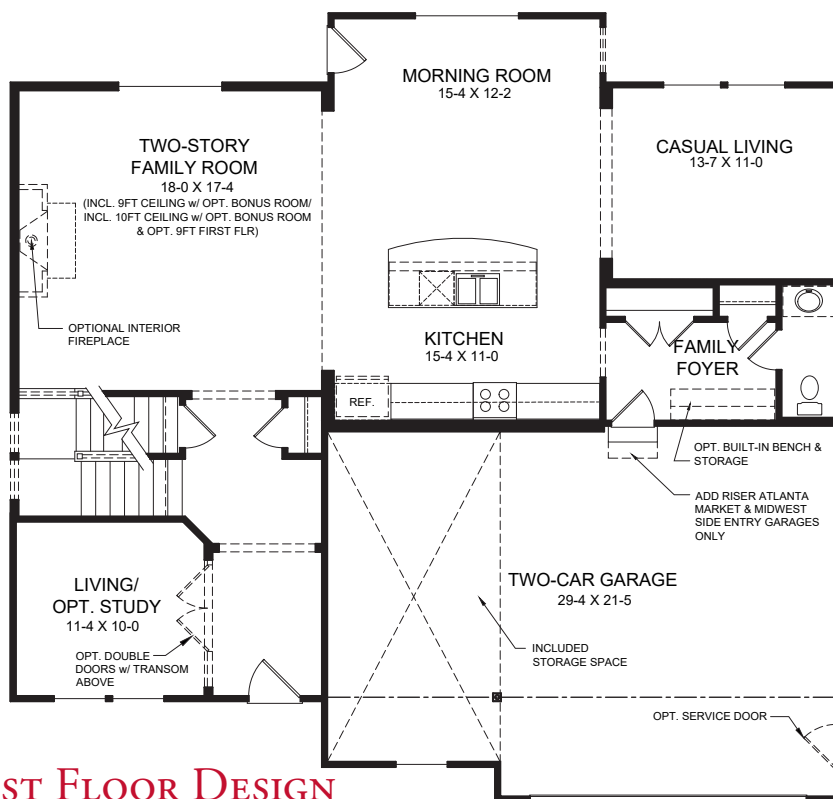


WESTERN CRAFTSMAN
(WITH OPTIONAL THREE-CAR
INTEGRATED FRONT ENTRY GARAGE)

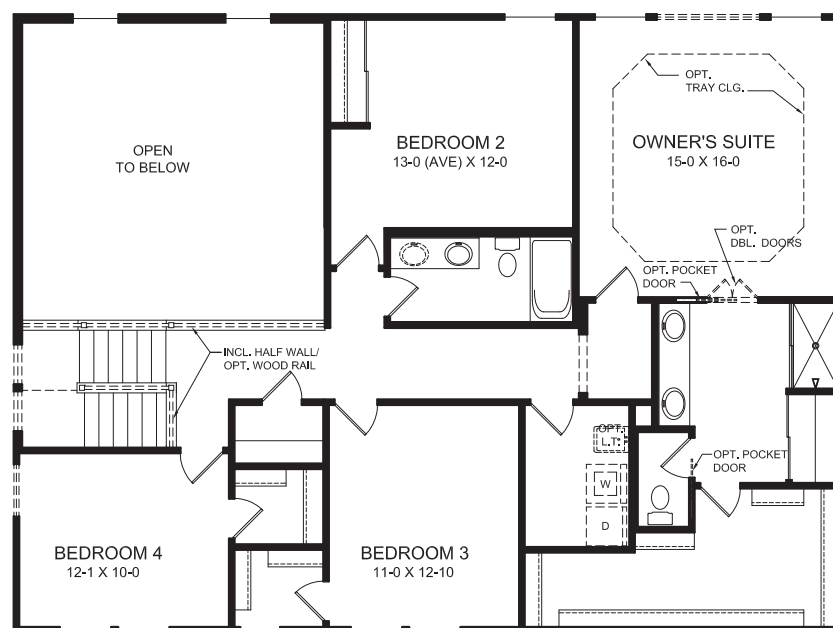
designed by: *FH*

Images & Options Available at fischerhomes.com

Our Plans Include You



FIRST FLOOR DESIGN



SECOND FLOOR DESIGN

FIRST FLOOR FEATURES

- Soaring Two-Story Family Room
- Living Room/Optional Study located in Front of the Home
- Open Kitchen Design with Expansive Island with Seating and Light-Filled Morning Room
- Casual Living Space Open to Kitchen/Family Rm./Morning Rm located in Rear of the Home
- Optional Private Guest Suite in Lieu of Casual Living Space
- Optional Pocket Office & First Floor Laundry with Walk-in Pantry in Lieu of Casual Living Space
- Spacious Family Foyer with Coat Closet
- Included Over-sized Garage with Large Storage Area
- Optional Built-in Appliances

SECOND FLOOR FEATURES

- Spacious Owner's Suite with Optional Tray Ceiling & Large Walk-in Closet
- Optional Owner's Bath with Separate Shower and Garden Tub
- Optional Deluxe Garden Bath with Ceramic Tile Shower & Garden Tub
- 4 Bedrooms
- Optional Expansive Bonus Room in Lieu of Two-Story Family Room
- Convenient Second Floor Laundry
- Optional 3rd Full Bath