



PRESTON

Maple Street Collection

welcome home.

Approximately 1621 sq ft



MODERN FARMHOUSE

designed by: *FH*



MODERN FARMHOUSE
(WITH OPTIONAL BRICK)

designed by: *FH*



WESTERN CRAFTSMAN

designed by: *FH*

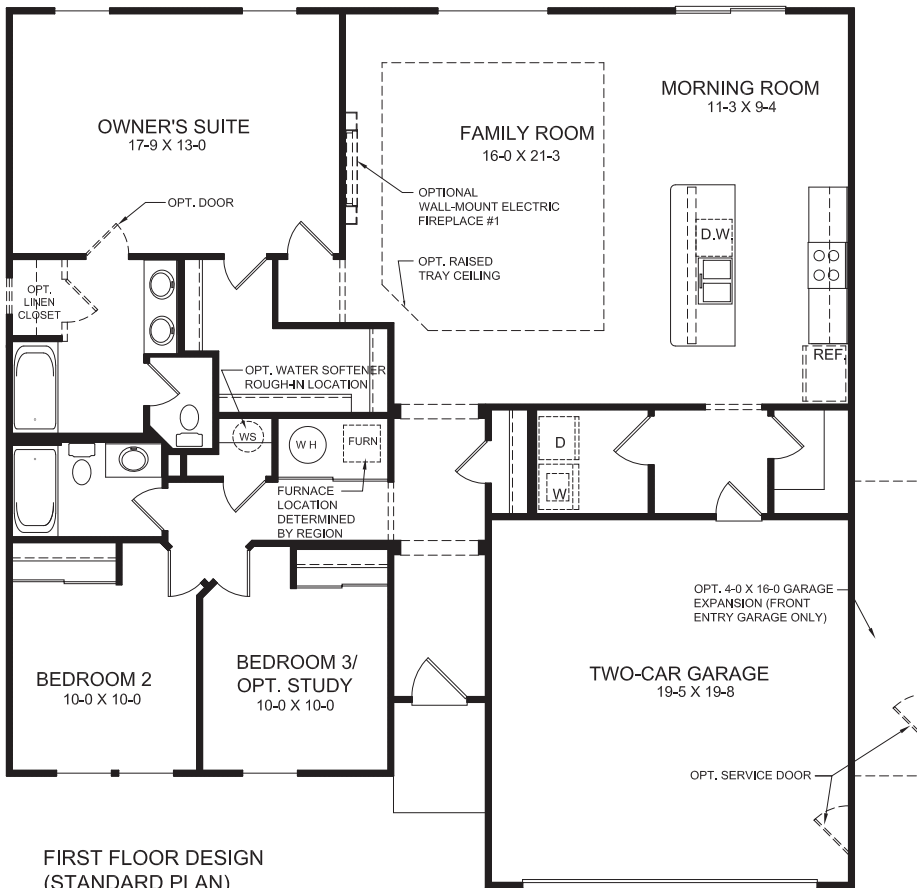


URBAN MODERN
(WITH OPTIONAL BRICK)

designed by: *FH*

Images & Options Available at fischerhomes.com

Our Plans Include You



FIRST FLOOR DESIGN
(STANDARD PLAN)

FIRST FLOOR FEATURES

- Optional Window Configuration in Family Room
- Option Window and Door Configuration in Morning Room
- Three Bedroom or Optional Two Bedroom with Study
- Open Family Room with Optional Electric Fireplace
- Optional Tray Ceiling in Family Room
- Optional Bay Window in Morning Room
- Included Kitchen Island with Seating
- Large Walk-in Pantry
- Owner's Suite Includes Private Bath and Walk-in Closet
- Included Foyer Arch Openings
- Optional 4 ft x 16 ft Garage Expansion
- Two Car Garage

OPTIONAL BASEMENT DESIGN

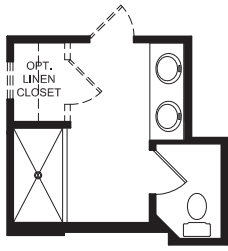
- Optional Full Bath Rough In



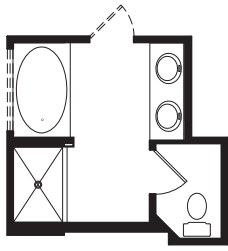
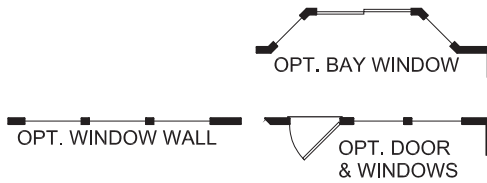
Images & Options Available at fischerhomes.com

Copyright © 2022 Fischer Homes, Inc. "Because we are constantly improving our product, we reserve the right to change features, brand names, dimensions, architectural details and designs. This brochure is for illustrative purposes only and not part of a legal contract. Windows, doors, and ceilings may vary on options and elevations selected. Not all features nor options are shown. Please ask our sales counselor for complete information."

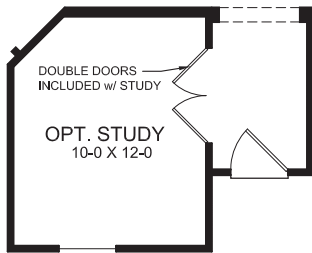
RVSD. 05/22
IM 05/21



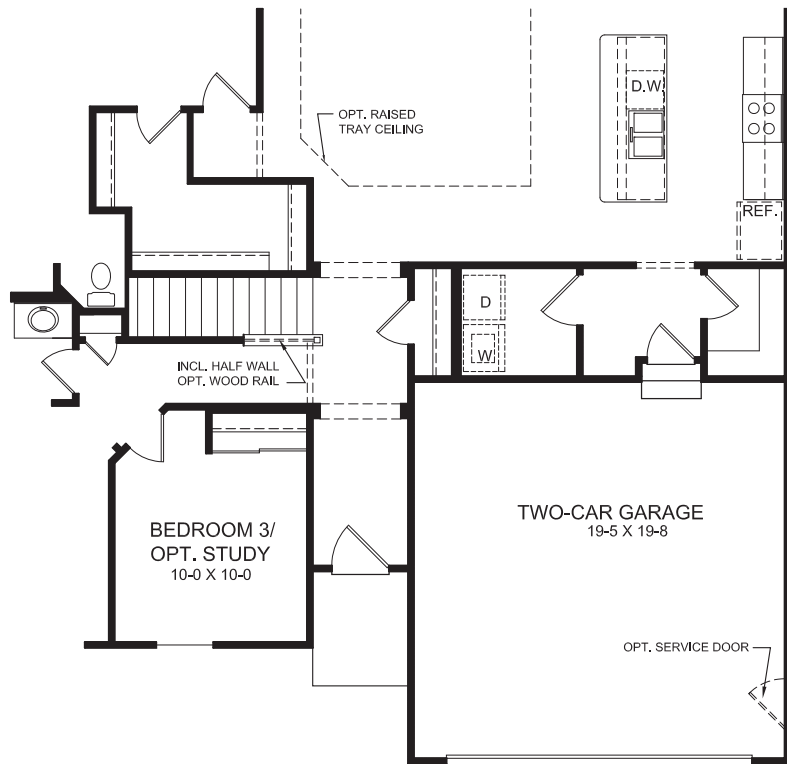
OPT. 5-FT SHOWER IN LIEU OF INCLUDED TUB



OPT. OWNER'S BATH



OPTIONAL STUDY IN LIEU OF BEDROOM 3



PARTIAL FIRST FLOOR DESIGN W/ OPTIONAL BASEMENT

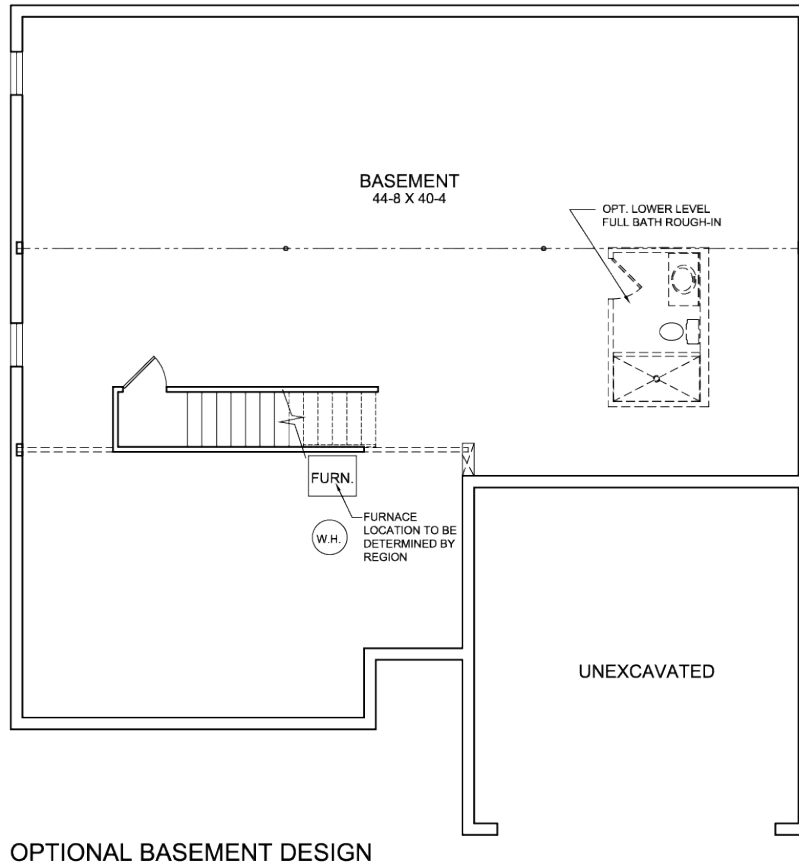
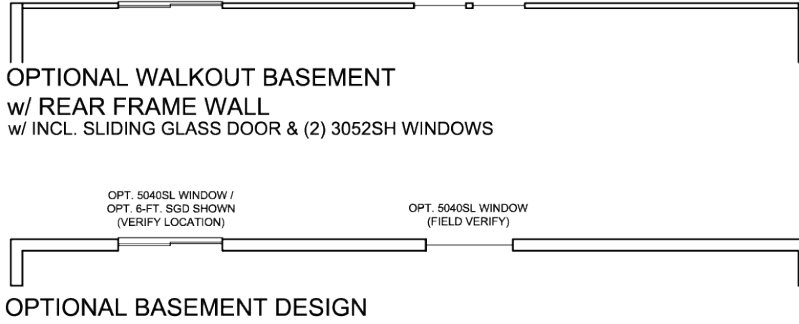
FIRST FLOOR DESIGN OPTIONS



Images & Options Available at fischerhomes.com

Copyright © 2022 Fischer Homes, Inc. "Because we are constantly improving our product, we reserve the right to change features, brand names, dimensions, architectural details and designs. This brochure is for illustrative purposes only and not part of a legal contract. Windows, doors, and ceilings may vary on options and elevations selected. Not all features nor options are shown. Please ask our sales counselor for complete information."

RVSD. 05/22
IM 05/21



BASEMENT DESIGN



Images & Options Available at [fischerhomes.com](https://www.fischerhomes.com)

Copyright © 2022 Fischer Homes, Inc. "Because we are constantly improving our product, we reserve the right to change features, brand names, dimensions, architectural details and designs. This brochure is for illustrative purposes only and not part of a legal contract. Windows, doors, and ceilings may vary on options and elevations selected. Not all features nor options are shown. Please ask our sales counselor for complete information."

RVSD. 05/22
IM 05/21