



# CHARLES

*Designer Collection*

welcome home.

Approximately 2457 sq ft and Up



**COASTAL CLASSIC**  
(WITH SIDE ENTRY GARAGE)

*designed by:*



**PACIFIC CRAFTSMAN**

*designed by:*



**MODERN FARMHOUSE**  
(WITH OPTIONAL BRICK)

*designed by:*

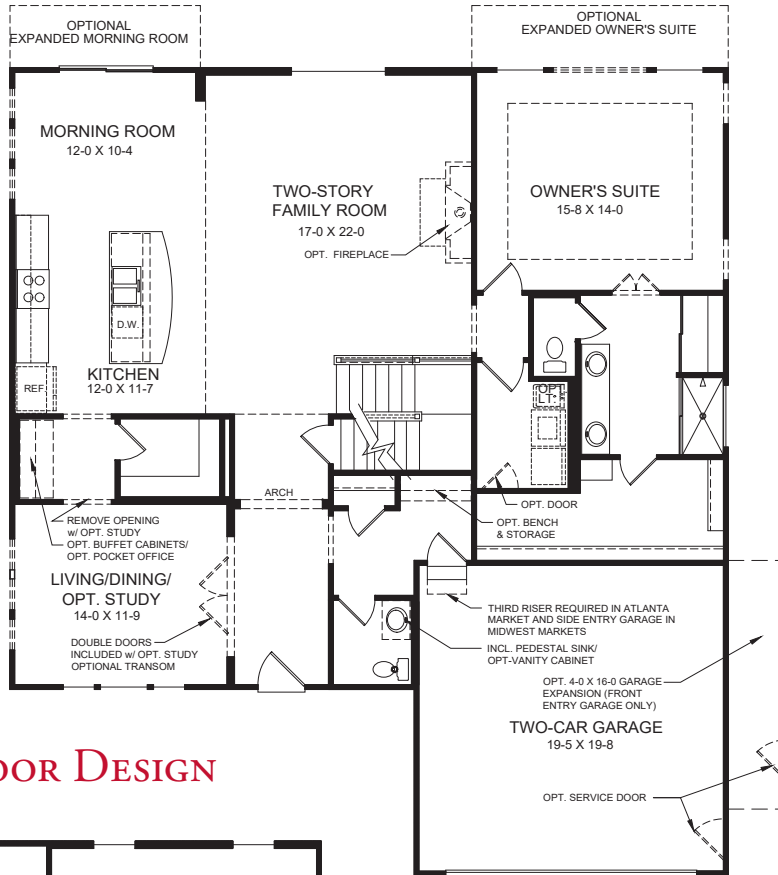


**CAMBRIDGE COTTAGE**  
(WITH OPTIONAL BRICK)

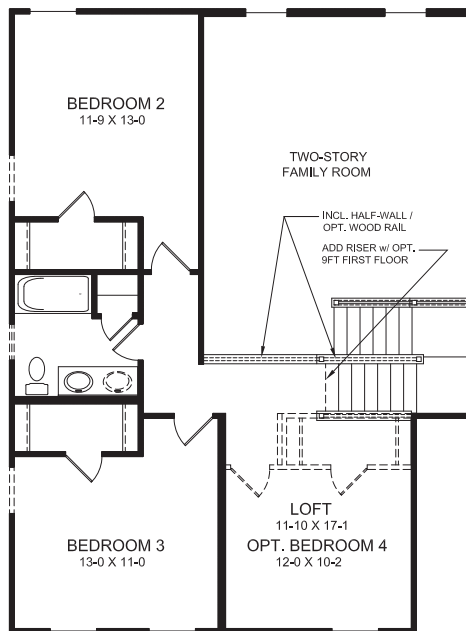
*designed by:*

Images & Options Available at [fischerhomes.com](https://www.fischerhomes.com)

Our Plans Include You



## FIRST FLOOR DESIGN



## SECOND FLOOR DESIGN

### FIRST FLOOR FEATURES

- Spacious Entry Foyer
- Included Living/Opt. Dining/Opt. Study Flex Space
- Optional First Floor Guest Suite with Private Bath
- Soaring Two-Story Family Room
- First Floor Owner's Suite Includes Private Bath and large Walk-in Closet
- First Floor Laundry with Optional Door to Owner's W.I.C.
- Convenient Family Foyer with Optional Built-in Bench and Storage
- Open Kitchen with Large Island and Over-sized Walk-in Pantry
- Optional Buffet Cabinets/Optional Pocket Office Cabinets
- Optional 4ft Owner's Suite Expansion
- Optional 4ft Morning Room Expansion
- Optional Tray Ceiling in Owner's Suite

### SECOND FLOOR FEATURES

- Includes Two Spacious Bedrooms with Walk-in Closets
- Includes Loft open to Family Room
- Optional Fourth Bedroom with Walk-in Closet in lieu of Loft
- Included Hall Bath