

2,212-4,295 SQFT

1 Story

2-6 Bedrooms

2-4.5 Baths



Photos, Options,
Virtual Tours
& More

Coastal Classic



Modern Prairie



American Heritage

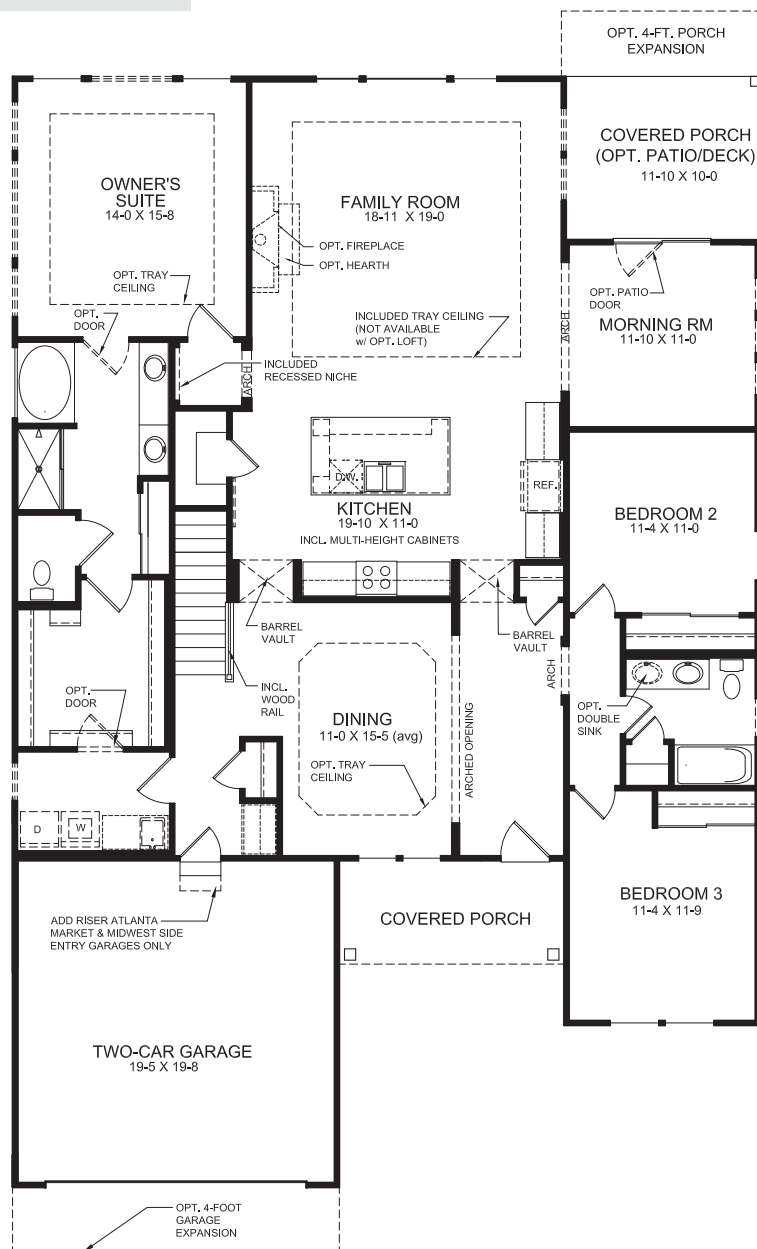
VIEW FLOORPLANS ON FISCHERHOMES.COM



© 2023 Fischer Homes, Inc. Because we are constantly improving our product, we reserve the right to change features, brand names, dimensions, architectural details and designs. This brochure is for illustrative purposes only and not part of a legal contract. Windows, doors, and ceilings may vary on options and elevations selected. Not all features nor options are shown. Please ask our sales counselor for complete information.

RVSD
12/23

Main Level



Main Level Features

- Three Bedroom Home with Optional Study in lieu of Bedroom #3
- Included 9ft First Floor Ceiling Height
- Included Formal Dining Space and Morning Room
- Optional Tray Ceiling in Family Room and Dining Space
- Family Foyer
- Unique Open Kitchen Design with Expansive Island with Seating and Pantry Closet
- Optional Built-in Appliance Kitchen
- Private Owner's Suite with Owner's Bath and Large Walk-In Closet
- Optional Deluxe Garden Bath with Ceramic Tile Shower and Garden Tub
- Optional Designer Bath with Ceramic Tile & Platform Tub
- Included Double Vanity in Owner's Bath
- Optional Direct Access from Owner's W.I.C. to Laundry
- Included Covered Rear Porch with Optional Patio/Deck
- Optional 4ft Garage Expansion
- Optional Three Car Garage
- Optional Loft with Optional Bedroom and Full Bath
- Optional Finished Lower Level
- Optional Powder Room

VIEW FLOORPLANS ON [FISCHERHOMES.COM](https://www.fischerhomes.com)



© 2023 Fischer Homes, Inc. Because we are constantly improving our product, we reserve the right to change features, brand names, dimensions, architectural details and designs. This brochure is for illustrative purposes only and not part of a legal contract. Windows, doors, and ceilings may vary on options and elevations selected. Not all features nor options are shown. Please ask our sales counselor for complete information.

RVSD
12/23