



HAMILTON

Maple Street Collection

welcome home.

Approximately 1818 sq ft



URBAN MODERN
(WITH OPTIONAL BRICK)

designed by: *FH*



CAMBRIDGE COTTAGE

designed by: *FH*



MODERN FARMHOUSE
(WITH OPTIONAL STONE)

designed by: *FH*



WESTERN CRAFTSMAN
(WITH OPTIONAL BRICK AND
OPTIONAL FULL PORCH)

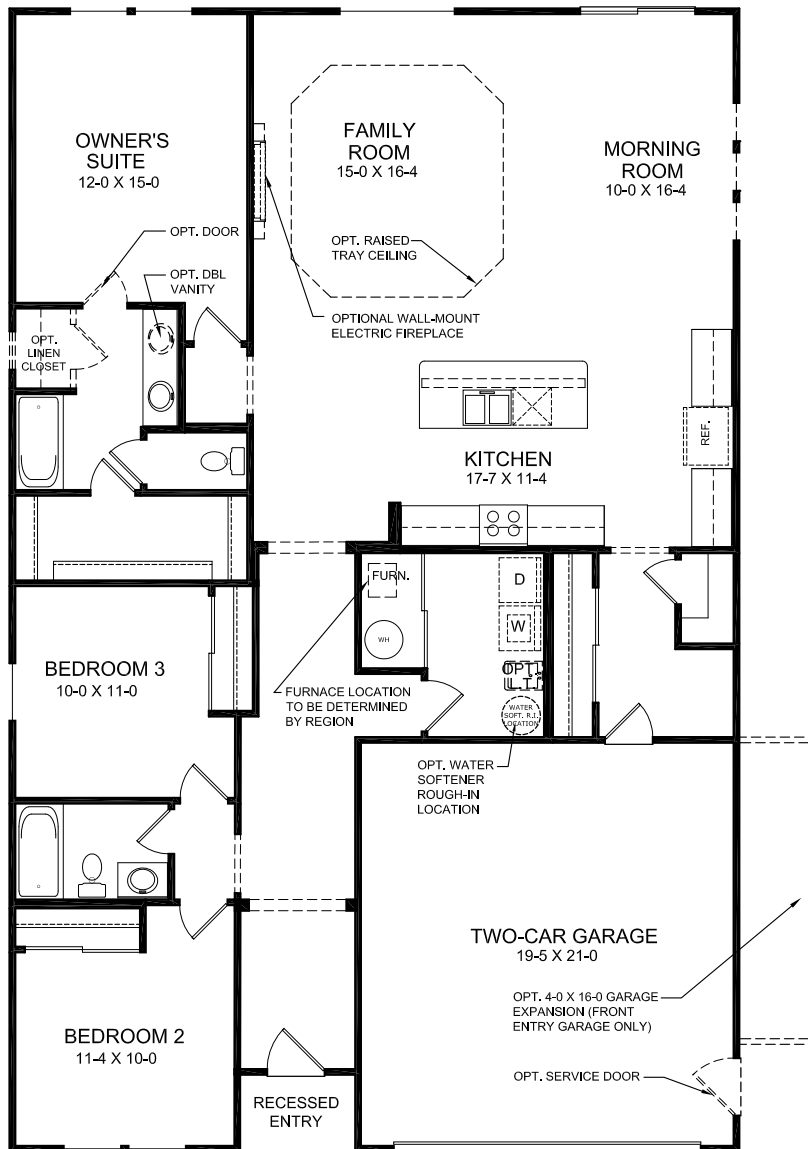
designed by: *FH*

Images & Options Available at [fischerhomes.com](https://www.fischerhomes.com)

Our Plans Include You

FIRST FLOOR FEATURES

- Owner's Suite with Walk-in Closet
- 2 Additional Bedrooms
- Open Kitchen Design includes Large Island with Seating
- Optional Door and Window Configuration in Morning Room
- Optional Window Configuration in Family Room
- Expansive Family Room with Optional Tray Ceiling
- Optional Study in lieu of Bedroom 3
- Optional Living/Dining in lieu of Bedroom 3
- Optional 5 ft Shower in Lieu of Tub in Owner's Suite
- Optional Owner's Bath with Tub and separate 5 ft Shower
- Optional Electric Fireplace
- Optional Internal Corner Fireplace with Optional Hearth
- Optional Built-in Bench & Storage in Family Foyer
- Optional 4 ft x 16 ft garage expansion
- Optional 9-foot Ceiling Height
- Optional 12-foot Ceiling Height in the Family Room, Kitchen, & Morning Room
- Two-Car Garage
- Optional 3-Car-Front Entry Garage



FIRST FLOOR DESIGN

OPTIONAL BASEMENT DESIGN

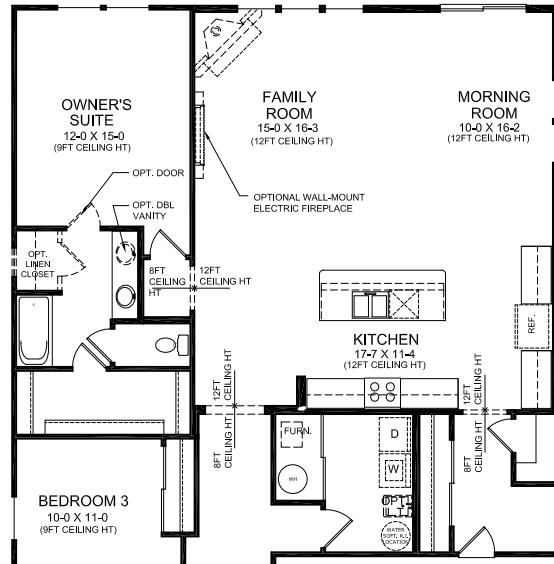
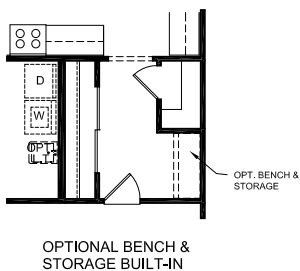
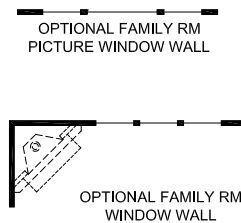
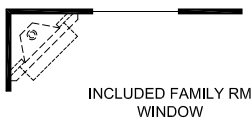
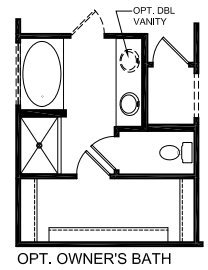
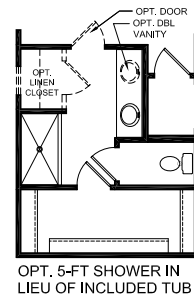
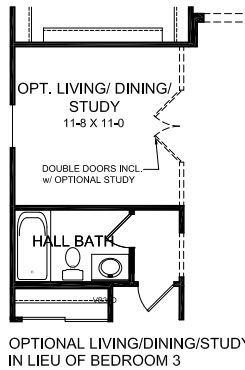
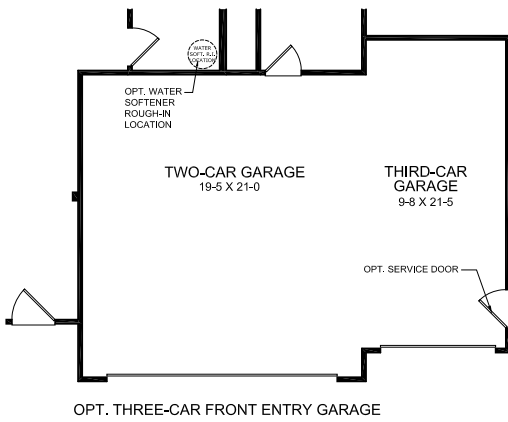
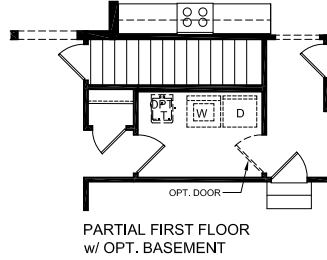
- Optional Full Bath Rough-in



Images & Options Available at fischerhomes.com

Copyright © 2021 Fischer Homes, Inc. "Because we are constantly improving our product, we reserve the right to change features, brand names, dimensions, architectural details and designs. This brochure is for illustrative purposes only and not part of a legal contract. Windows, doors, and ceilings may vary on options and elevations selected. Not all features nor options are shown. Please ask our sales counselor for complete information."

RVSD. 05/21
IM 05/21



FIRST FLOOR SELECT OPTIONS
 OPT. 12-FT. CEILING HEIGHT
 FAMILY ROOM, KITCHEN, MORNING ROOM
 (REQUIRES OPT 9-FT FIRST FLOOR CEILING HEIGHT)
 OPTIONAL FAMILY RM RAISED TRAY CEILING NOT AVAILABLE w/ OPTIONAL 12FT CEILING HEIGHT
 OPTIONAL MORNING ROOM REAR WALL PATIO DOOR w/ WINDOW NOT AVAILABLE w/ OPT. 12FT CEILING HEIGHT

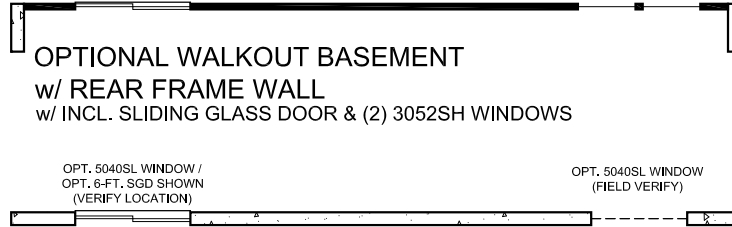
FIRST FLOOR DESIGN OPTIONS



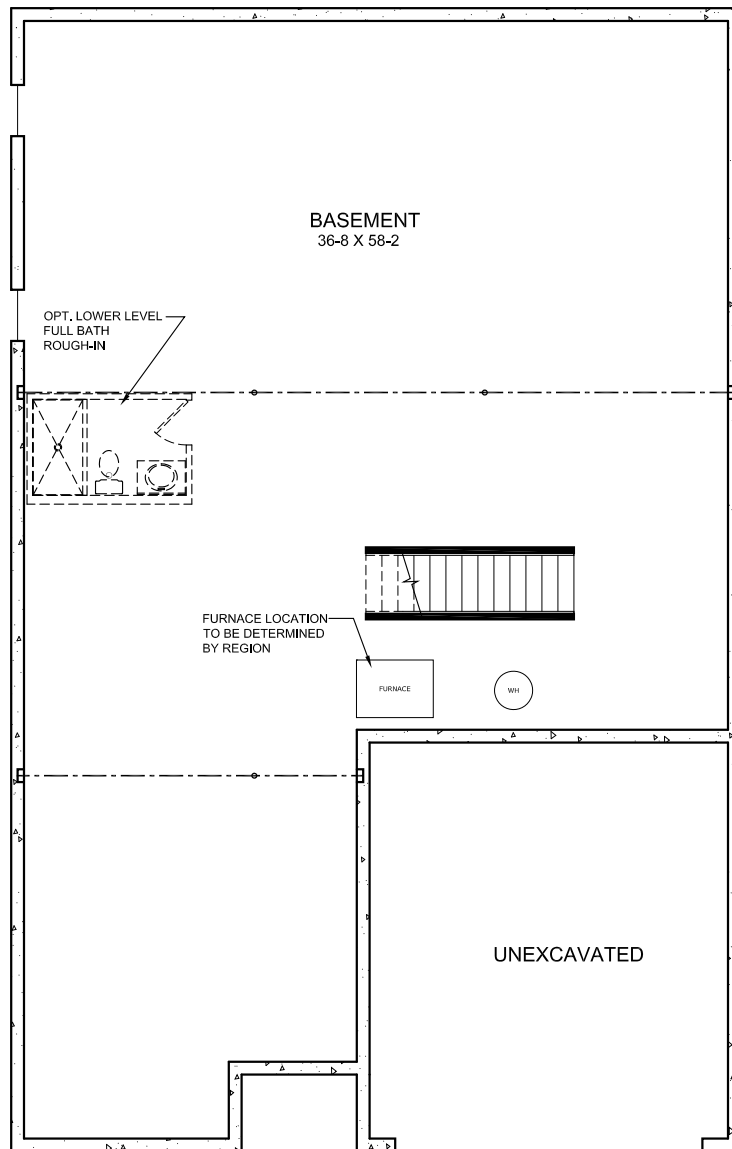
Images & Options Available at fischerhomes.com

Copyright © 2021 Fischer Homes, Inc. "Because we are constantly improving our product, we reserve the right to change features, brand names, dimensions, architectural details and designs. This brochure is for illustrative purposes only and not part of a legal contract. Windows, doors, and ceilings may vary on options and elevations selected. Not all features nor options are shown. Please ask our sales counselor for complete information."

RVSD. 05/21
 IM 05/21



OPTIONAL BASEMENT DESIGN



BASEMENT DESIGN



Images & Options Available at fischerhomes.com

Copyright © 2021 Fischer Homes, Inc. "Because we are constantly improving our product, we reserve the right to change features, brand names, dimensions, architectural details and designs. This brochure is for illustrative purposes only and not part of a legal contract. Windows, doors, and ceilings may vary on options and elevations selected. Not all features nor options are shown. Please ask our sales counselor for complete information."

RVSD. 05/21
IM 05/21