

3,135-3,156 SQFT

2 Story

4-5 Bedrooms

2.5-3.5 Baths



Photos, Options,
 Virtual Tours
 & More

Modern Farmhouse



Western Craftsman



Urban Modern



Coastal Classic

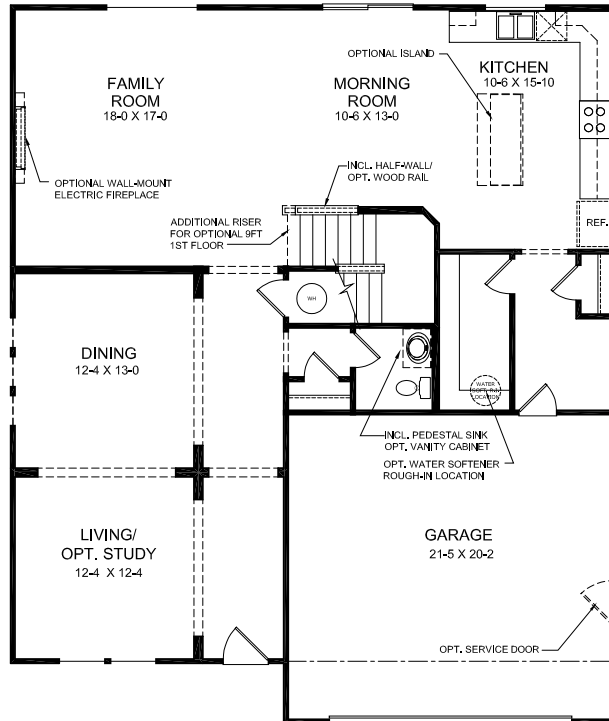
VIEW FLOORPLANS ON FISCHERHOMES.COM



© 2023 Fischer Homes, Inc. Because we are constantly improving our product, we reserve the right to change features, brand names, dimensions, architectural details and designs. This brochure is for illustrative purposes only and not part of a legal contract. Windows, doors, and ceilings may vary on options and elevations selected. Not all features nor options are shown. Please ask our sales counselor for complete information.

RVSD
 12/23

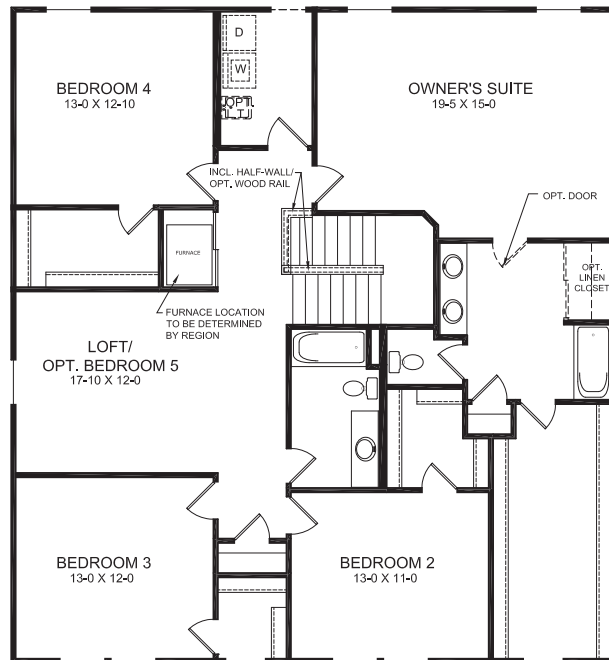
Main Level



Main Level Features

- Open Kitchen Design with Walk-in Pantry and Optional Kitchen Island
- Optional Door and Window Configuration in Morning Room
- Optional 2-ft. Morning Room Expansion
- Optional Window Configuration in Family Room
- Optional Study
- Optional Electric Fireplace
- Optional Internal Fireplace with Optional Hearth
- Optional Built-in Bench & Storage in Family Foyer
- Optional 4 ft x 16 ft garage expansion
- Two-Car Garage
- Optional 3-Car-Front Entry Garage

Upper Level



Upper Level Features

- 4 Bedrooms all with Walk-in Closets with Loft
- Optional Bedroom 5
- Optional Bedroom 4 Full Bathroom
- Second Floor Laundry Room
- Optional 5 ft Shower in Lieu of Tub in Owner's Suite
- Optional Owner's Bath with Tub and separate 5 ft Shower

VIEW FLOORPLANS ON FISCHERHOMES.COM

