



YOSEMITE

Maple Street Collection at Heathermor

welcome home.

Approximately 2151 sq ft



ARTS & CRAFTS F
(SHOWN WITH TRADITIONAL PAINT SCHEME)



TRADITIONAL D

To view available options for this design visit fischerhomes.com

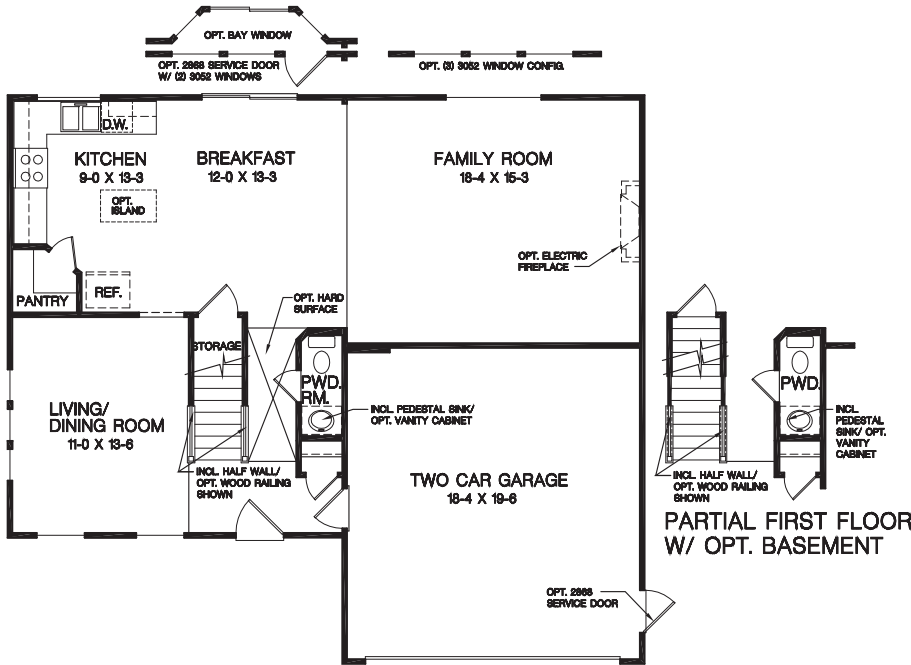


YOSEMITE

Maple Street Collection at Heathermor

welcome home.

Approximately 2151 sq ft



FIRST FLOOR FEATURES

- Optional Window and Door configuration in breakfast area in lieu of sliding glass door
- Optional Bay Window in breakfast area
- Optional Window configuration in family room in lieu of sliding glass window
- Formal Living /Dining Room
- Two car garage



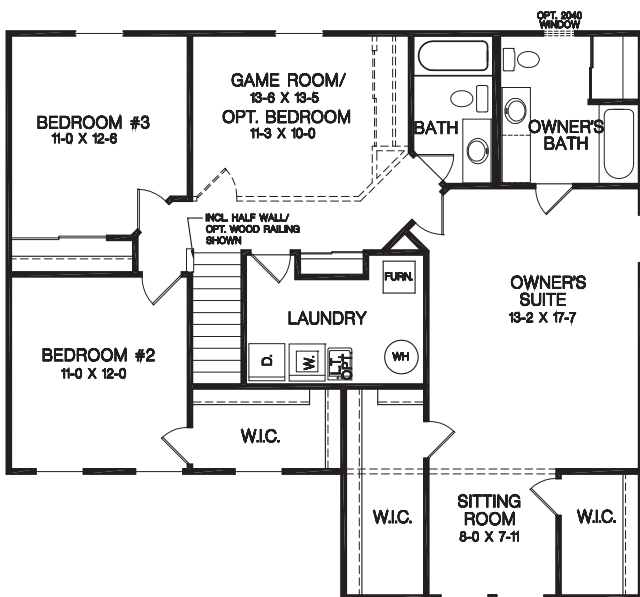
PARTIAL SECOND FLOOR DESIGN W/OPT. OWNER'S BATH



PARTIAL SECOND FLOOR DESIGN W/ OPT. BASEMENT
NOTE: HVAC AND WATER HEATER MOVES TO BASEMENT

SECOND FLOOR FEATURES

- Three bedrooms and Game Room
- Optional 4th bedroom in lieu of Game Room
- Owner's Suite includes sitting room, private bath and 2 walk in closet
- Optional Soaking Tub and Shower Stall in Owner's Suite
- Optional Window in Owner's Bath



OPTIONAL BASEMENT FEATURES

- Optional full bath rough in



To view available options for this design visit fischerhomes.com

Copyright © 2008 Fischer Homes, Inc. "Because we are constantly improving our product, we reserve the right to change features, brand names, dimensions, architectural details and designs. This brochure is for illustrative purposes only and not part of a legal contract. Windows, doors, and ceilings may vary on options and elevations selected. Not all features nor options are shown. Please ask our sales counselor for complete information."

RVSD. 05/12
IM 09/09